An aerial photograph of a vast, dense green forest. A narrow dirt path winds through the trees, with a small group of people visible on it. In the lower-middle part of the forest, there is a small building with a bright green roof. The image is partially framed by a white, wavy-edged graphic on the right side, which contains two small circular cutouts of the forest scene.

The Contribution of Private Sector in Community and success cases sharing

Poranee Kongamornpinyo

Southeast Asia Corporate Affairs
Director

Dow Thailand

25 April 2024



Founded in 1897 by a chemist and innovator, Herbert Henry Dow.

Dow is the world's leading material sciences company with a purpose to use our expertise in collaboration with our partners to help deliver a sustainable future.

Our ambition to be the most innovative, customer-centric, inclusive and sustainable materials science company.

Dow's portfolio delivers a broad range of differentiated science-based solutions for high-growth markets.



Infrastructure



Packaging



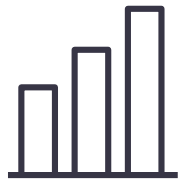
Mobility



Consumer Care



Industrial Solutions



2022 NET SALES

\$57B



INNOVATION CENTERS

12

In 10 countries on 4 continents



MANUFACTURING SITES

>100 sites

In > 30 countries

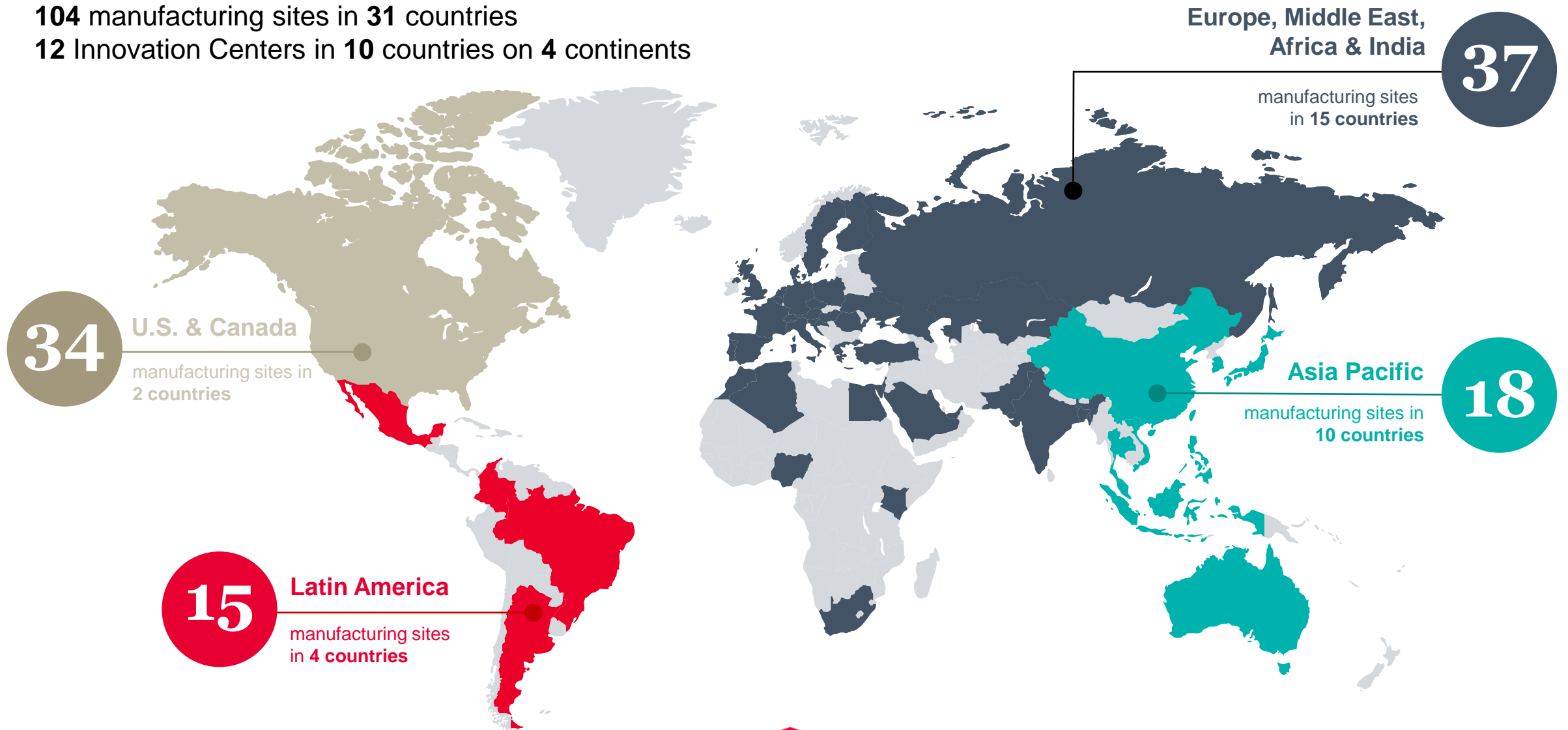


GLOBAL REACH

>150 countries

Global Scale, Local Reach and Collaborative Innovation

104 manufacturing sites in 31 countries
12 Innovation Centers in 10 countries on 4 continents



ABOUT DOW THAILAND GROUP

Dow started its business in Thailand in 1967, then expanded through a joint venture with SCG Chemicals in 1987.

Today, Thailand is the largest manufacturing hub of Dow in Asia Pacific, with 13 plants in 3 industrial estates in Rayong province, namely

- Map Ta Phut Industrial Estate
- Asia Industrial Estate
- WHA Eastern Industrial Estate (Map Ta Phut).



Dow's Sustainability Journey: Increasing Value Over Time



DOW

Footprint

Reducing costs,
waste and risk

2005
EH&S
Goals

Blueprint Thinking

Rethinking business models and
collaborating to grow impact

2025
Sustainability
Goals

Handprint

Redesigning products and
processes for customers

2015
Sustainability
Goals

Climate Protection, Circular Economy and Safer Materials

Increasing our commitments to achieve zero-carbon
emissions and advance circularity while helping meet
rising demand for safer and more sustainably
produced materials for our customers and society

2030
and Beyond



DOW

General Business

Industry Leader in Environmental Sustainability



PROTECT THE CLIMATE

By 2030, Dow will reduce its net annual carbon emissions by 5 million metric tons vs. its 2020 baseline¹ (15% reduction). By 2050, Dow aspires to be carbon neutral (Scope 1 + 2 + 3 plus product benefits).

Clear path to **reduce carbon emissions 30% by 2030**, from 2005 levels

Advanced plans to build the **world's first net-zero² carbon emissions, integrated ethylene cracker** and derivatives site in Fort Saskatchewan, Alberta

Announced a project with X-energy to **install advanced nuclear technology** at our Seadrift, Texas, site to provide safe, reliable low-carbon power and steam

Developed Scope 1 and 2 carbon emissions reduction plans for Dow's 25 highest-emitting sites



TRANSFORM THE WASTE

By 2030, Dow will transform plastic waste and other forms of alternative feedstock to commercialize 3 million metric tons of circular and renewable solutions annually.

We are **collaborating to invest in key technologies and infrastructure** to significantly increase global recycling



CLOSE THE LOOP

By 2035, Dow will close the loop by enabling 100% of Dow products sold into packaging applications to be reusable or recyclable.

>**80%** of Dow products sold into packaging applications are **reusable or recyclable**

Post-consumer recycled resins: REVOLOOP™ sales and supply partnerships in every geography

Developing advanced recycling feedstocks



Introduced one of **first bio-based, high-performance polyolefin elastomers**



¹ The value of the baseline equals 34.7 million metric tons of carbon dioxide emissions.

² In regard to Scope 1 and 2 emissions.

Banchang Material Recovery Facility (MRF)



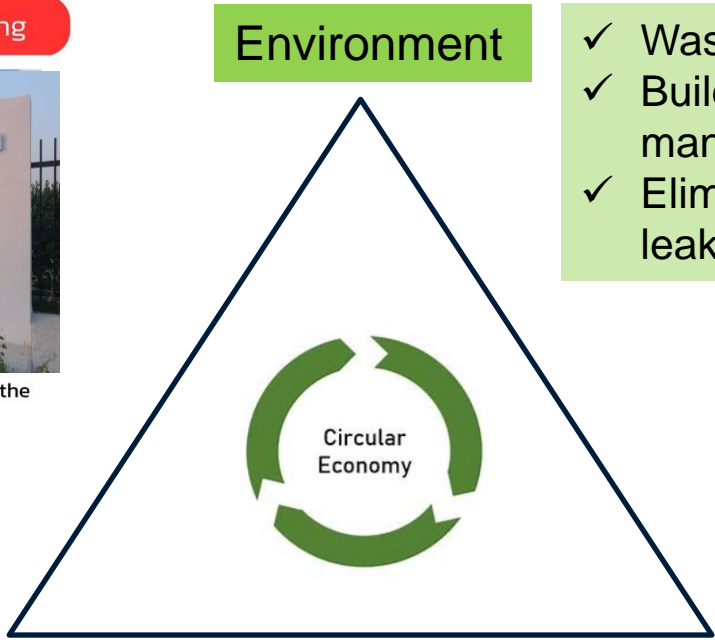
- Co-funding between government and private sector
- 1st Plastic Circularity Community Enterprise in Thailand
- Established through strong commitment with the effective collaborative partnership
- Local and Affordable Technology and Innovation



This MRF is located at Ban Chang Municipality, Ban Chang District, Rayong Province, the eastern part of Thailand.

Environment

- ✓ Waste management system
- ✓ Build the ecosystem for waste management system
- ✓ Eliminate the plastic waste leaked into the environment



Social

- ✓ Build the awareness and knowledge
- ✓ Community engagement
- ✓ Develop to be Innovation Learning Center for recyclable materials

Economy

- ✓ Bring extra income to the community
- ✓ Creating a job opportunity for community residences

Banchang Material Recovery Facility (MRF)



Operated in Q4, 2023 onwards



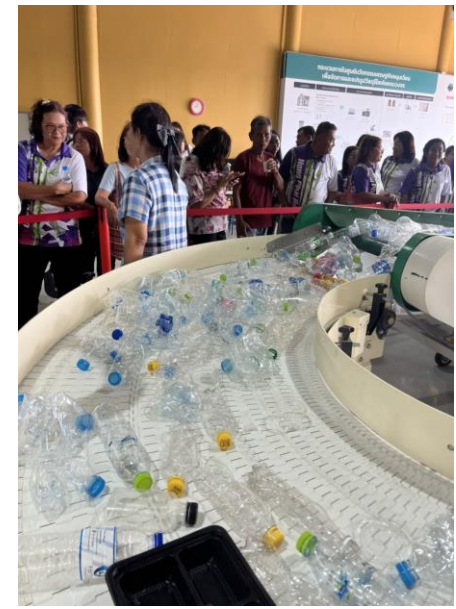
4 jobs created



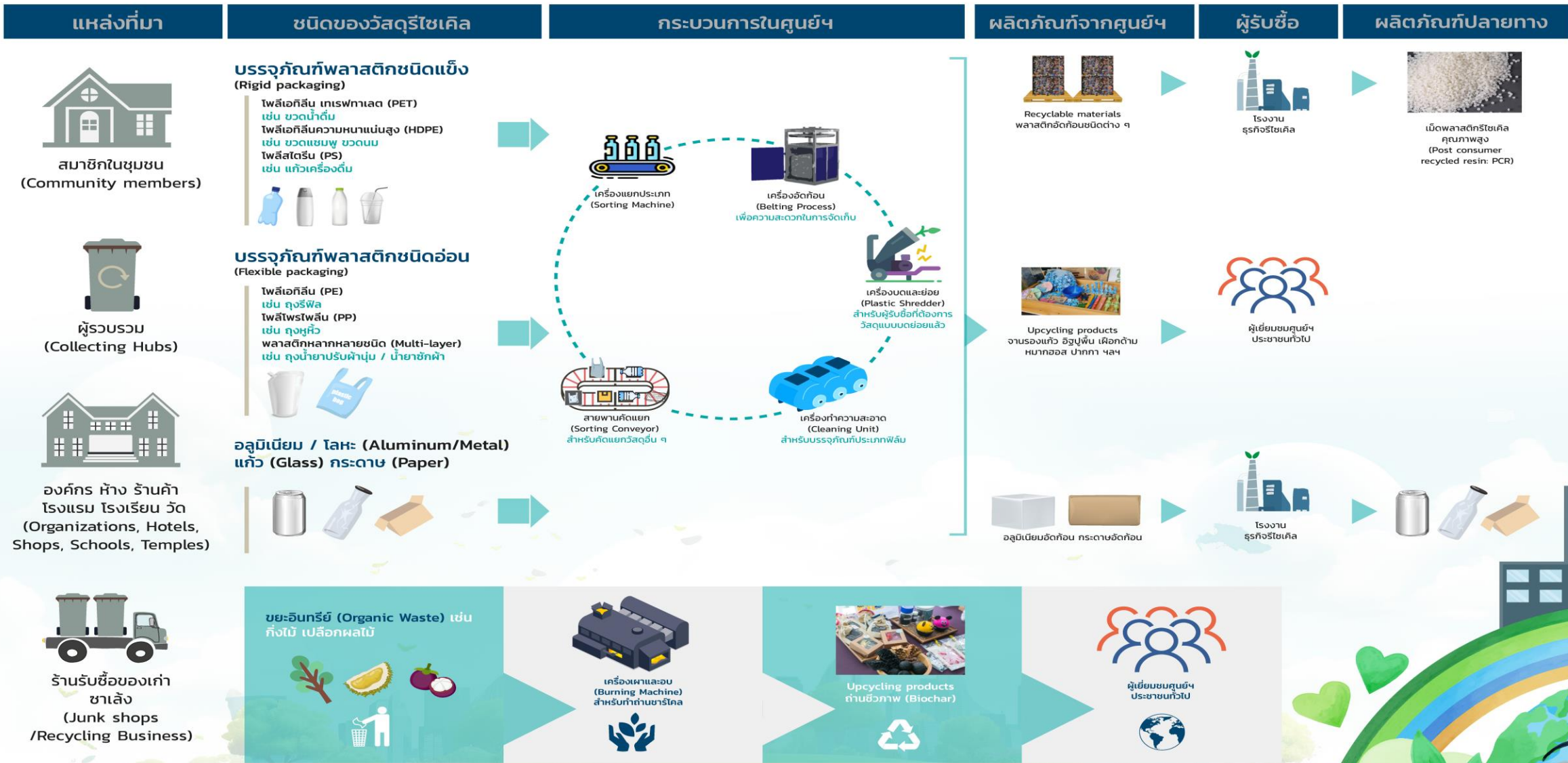
7 tons of recyclable materials collected



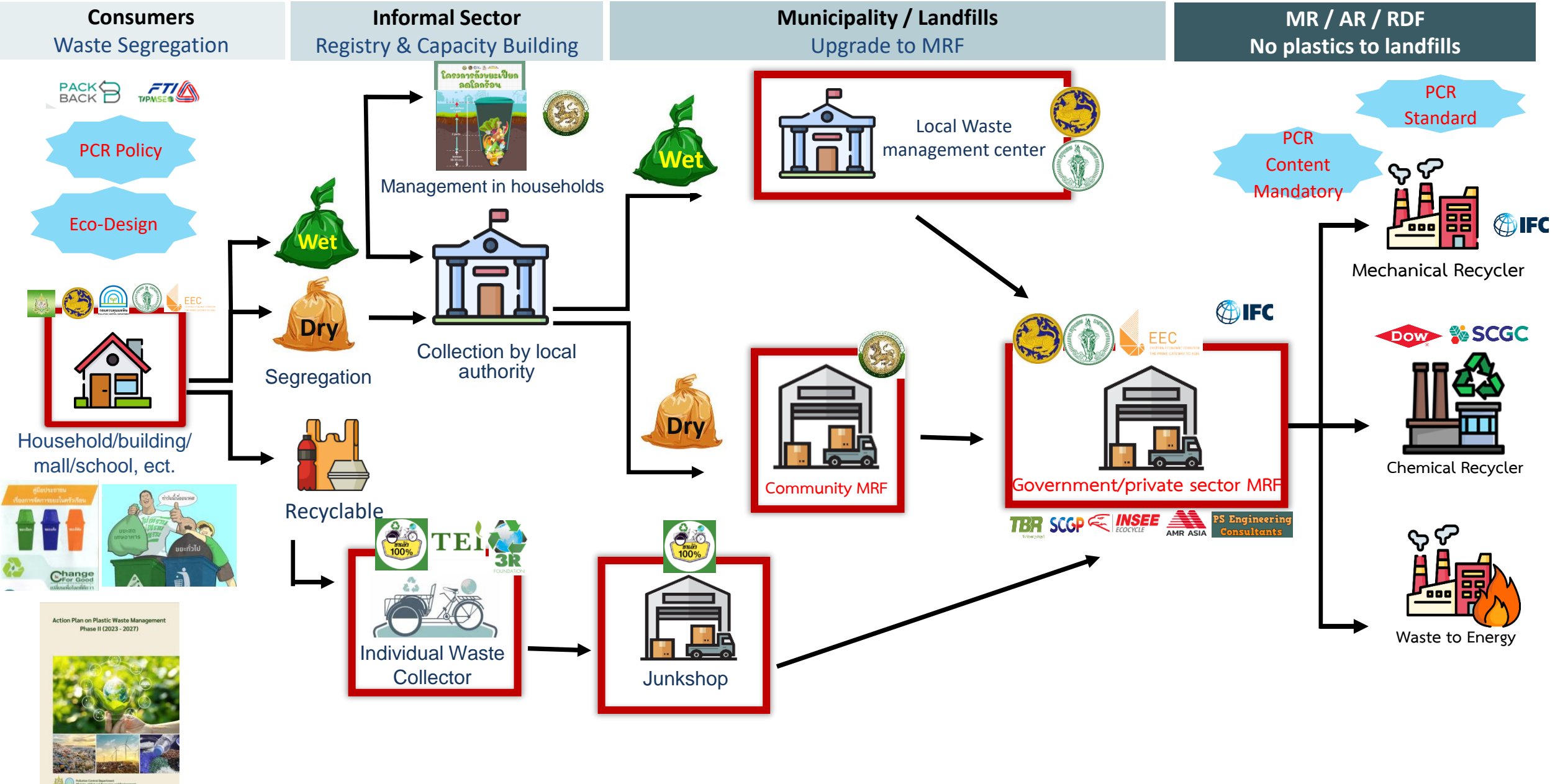
500 members



Banchang Material Recovery Facility (MRF) – Process Flow



Building Thailand Plastic Circularity Ecosystem





ALLIANCE
TO END
PLASTIC
WASTE



SMART RECYCLING HUB : BUILDING PLASTIC CIRCULARITY ECOSYSTEM



Building Plastic Circularity Ecosystem

PPP Plastics Implementation Partners

Civil Society Organization



Government Organization



Private Sector



PPP Plastics

International Organization



Educational Institution



43 Organizations

PPP Plastics

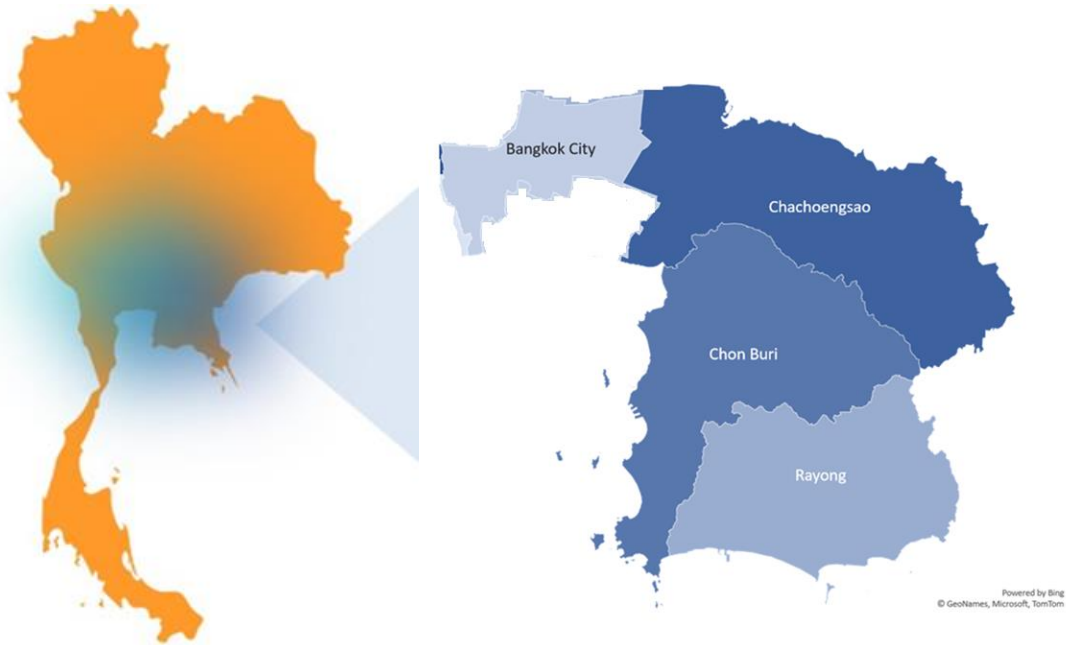


Network Partners



AEPW Smart Recycling Hub

Target: Bangkok and 3 EEC provinces to recover **high-quality plastic** feedstock of at least **50,000 tons/ year by 2026**



- **Feasibility Study** (6 months in Nong Khaem, 12 months in other BMA and EEC)
- **Infrastructure development**
 - BMA Nong Kham → 1 MRF Unit (40 tons/day)
 - Other BMA and EEC → 5-10 units

Collaboration

**is the key
for success**

